

Metals

for solo dan trauh and tape

The dan trauh is to be amplified. The tape-part consists of four discrete channels, to be sent to four corners of the concert hall. The speakers should be placed relatively far from the audience in order to obtain a quadrophonic experience for the audience. Practising with tape is necessary to solve timing issues.

Tuning: (i) = 17 strings (ii) = 18 strings

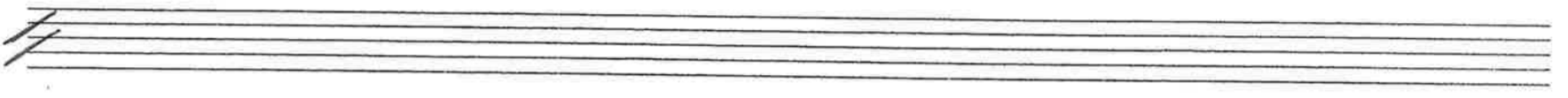
♩ = 26 (which is the tempo of the tape)

Toke Branson Odin 2007/rev. 2010

A 1" No arpeggio unless written

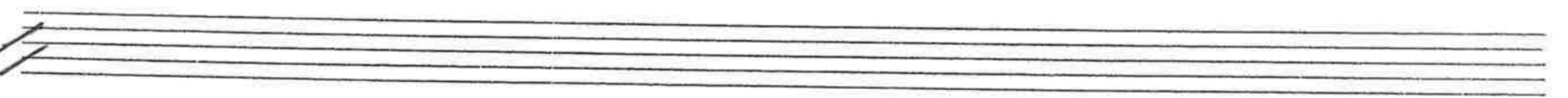
tape part arpeggio

pp, dolce



B sul f#/g#-1

Subito p



C Subito pp, dolce

D sul f#'''

Subito ff



E Subito mf

Subito pp, dolce



E sol f[#]/g[#] -7

G sol f[#]/g[#] -7

I

pic ff

J sol f[#]/g[#] -7

duration 4'5"

