

Canon for Dan Tranh

for ≥ 19 stringed dan tranh

Toke Bronson Odin 2010

Tuning:

Notes on top staff: G, A, B, C, D

Notes on bottom staff: E, F, G, A, B

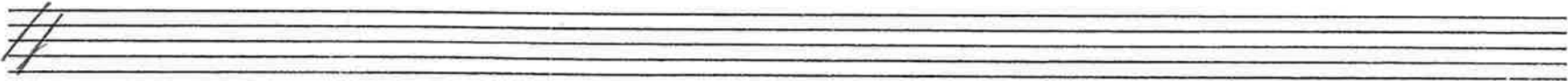
Slow, but not too slow ($\text{♩} \approx 60$)

Some use of arpeggio is necessary, especially in section [B]; it shouldn't necessarily be avoided.

A

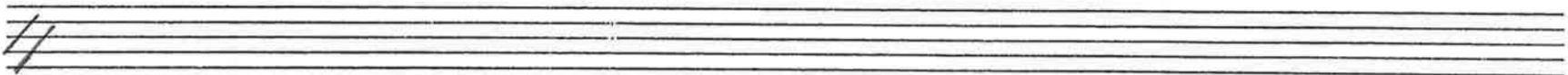
B

Handwritten musical notation for the first system, consisting of a treble clef staff and a bass clef staff. The treble staff contains a sequence of notes with various accidentals (sharps and naturals) and stems. The bass staff contains fewer notes, primarily naturals and sharps.

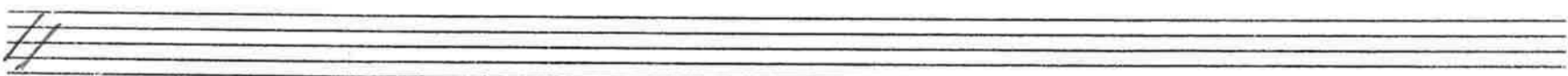


C

Handwritten musical notation for section C, featuring a treble clef staff with notes and accidentals, and a bass clef staff with notes and accidentals.

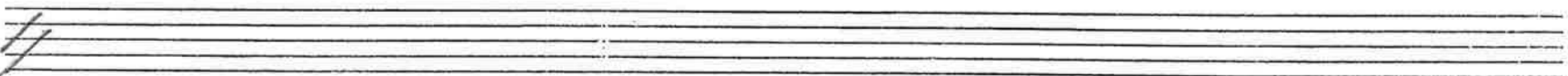


Handwritten musical notation for the second system, consisting of a treble clef staff and a bass clef staff. The treble staff contains a sequence of notes with various accidentals and stems. The bass staff contains notes with naturals and sharps.



D

Handwritten musical notation for section D, featuring a treble clef staff with notes and accidentals, and a bass clef staff with notes and accidentals. A dynamic marking 'f' is present in the treble staff.



Handwritten musical notation for the third system, consisting of a treble clef staff and a bass clef staff. The treble staff contains a sequence of notes with various accidentals and stems. The bass staff contains notes with naturals and sharps, and includes an arrow pointing to a specific note.

